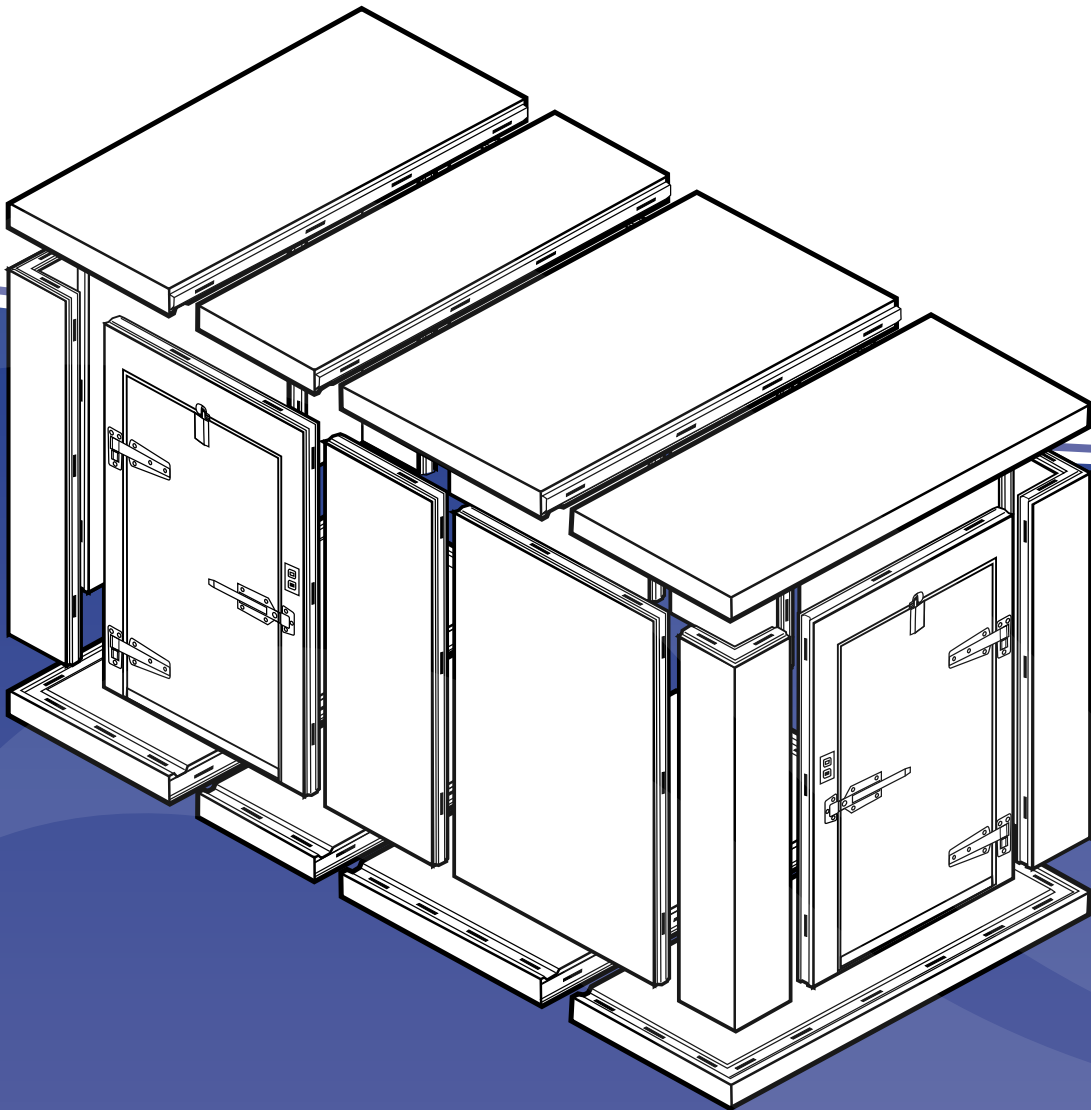


# TAFCO

*Walk-In to Quality*



Energy Independence and Security Act of 2007 Compliant



# PRODUCT GUIDE

# PANEL FABRICATION

Better panel fabrication means one thing: better walk-ins. The panels consist of urethane insulation, which is sandwiched between interior and exterior metal “skin”. This metal skin has been die-formed and gauged for uniformity in size. The edges of the panels are tongue and groove with Tafco SureLock fasteners which are “foamed-in-place” at time of fabrication.

The panels are provided with NSF listed PVC gaskets which are “foamed-in-place” on both interior and exterior sides of the panel. The gaskets are impervious to all stains, greases, oils, mildews, etc. They ensure an air-tight seal and also eliminate the need for seam caulking.

The urethane foam is bonded to the inner surfaces of metal pans, having an average thermal conductivity (K factor) of 0.13 BTU/hr/ft<sup>2</sup>/degrees/Fahrenheit/inch. Also, the panels have an overall coefficient of heat transfer (U factor) of no more than 0.0312. As tested in accordance with ASTM C 518-2004, the R-factor for coolers at temperatures of 55 °F is greater than 29.0 for 4” thick panels. The R-factor for 5” thick panels is greater than 36.0. For freezers at temperatures of 20 °F, the R factor is greater than 32.0 for 4” thick and greater than 40.0 for 5” thick panels.

The prefabricated urethane foamed panels shall be supplied with a Class 1 fire hazard classification according to UL 723 (ASTM-E-84), as tested by Underwriters Laboratories, Inc. Panels shall have a flame spread rating of 25 or less and bear a certified Underwriters Laboratories, Inc. label.



Tafco prides itself in using CFC free foam. This environmentally friendly foam is 100% CFC and HCFC Free, with a 0% ODP (ozone depletion potential).

Panels are offered with a wide variety of metal and other finishes. These include Galvalume, Stainless Steel, Aluminum, Galvanized Steel, Embossed, Smooth, White, San Tan, FRP, antimicrobial coated metal, and multiple color finishes.



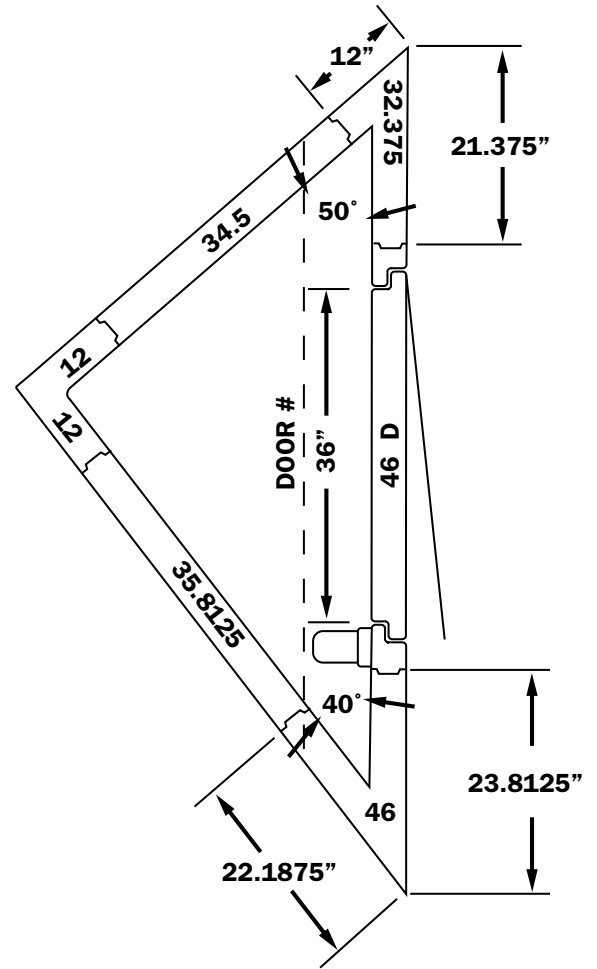
Mean Temperature for Freezer 20°	
K-Factor = .1232	R-Factor = 8.12 per inch
R-Factor 4” Panel = 32.5	U-Factor 4” = .031
R-Factor 5” Panel = 40.6	U-Factor 5” = .025
R-Factor 6” Panel = 48.7	U-Factor 6” = .021

Mean Temperature for Cooler 55°	
K-Factor = .1375	R-Factor = 7.26 per inch
R-Factor 4” Panel = 29.04	U-Factor 4” = .035
R-Factor 5” Panel = 36.3	U-Factor 5” = .027
R-Factor 6” Panel = 43.6	U-Factor 6” = .023



# MODULAR FLEXIBILITY

Tafoo cooler and freezer panels are available in hundreds of sizes, allowing flexibility of design. We are able to make almost any size and shape box, ensuring we can meet your specific space requirements. Panels come in many standard sizes, with custom size panels available upon request. These light-weight modular panels are easy to handle and allow assembly, disassembly, relocation, and expansion. On average, two men can assemble an 8' x 10' walk-in in approximately three hours. The ease of changing out panels ensures that if future expansion of your walk-in is ever necessary, reconfiguration is easy.



**Reference Table for Total Overall Nominal and Actual Dimensions**

Nom	Actual	Nom	Actual	Nom	Actual	Nom	Actual	Nom	Actual	Nom	Actual
4'	3'11"	21'	20' 2.5"	37'	36' 6"	53'	52' 9.5"	70'	69' 1"	86'	85' 4.5"
5'	4' 10"	22'	21' 2"	38'	37' 5.5"	54'	53' 9"	71'	69' 0.5"	87'	86' 4"
6'	5' 10"	23'	22' 1.5"	39'	38' 5"	55'	54' 8.5"	71'	71' 0"	88'	87' 3.5"
7'	6' 9.5"	24'	23' 1"	40'	39' 4.5"	56'	55' 8"	72'	71' 11.5"	89'	88' 3"
8'	7' 9"	25'	24' 0.5"	41'	40' 4"	57'	56' 7.5"	73'	72' 11"	90'	89' 2.5"
9'	8' 8.5"	25'	25'	42'	41' 3.5"	58'	57' 7"	74'	73' 10.5"	91'	90' 2"
10'	9' 8"	26'	25' 11.5"	43'	42' 3"	59'	58' 6.5"	75'	74' 10"	92'	91' 1.5"
11'	10' 7.5"	27'	26' 11"	44'	43' 2.5"	60'	59' 6"	76'	75' 9.5"	93'	92' 1"
12'	11' 7"	28'	27' 10.5"	45'	44' 2"	61'	60' 5.5"	77'	76' 9"	94'	93' 0.5"
13'	12' 6.5"	29'	28' 10"	46'	45' 1.5"	62'	61' 5"	78'	77' 8.5"	94'	94' 0"
14'	13' 6"	30'	29' 9.5"	47'	46' 1"	63'	62' 4.5"	79'	78' 8"	95'	94' 11.5"
15'	14' 5.5"	31'	30' 9"	48'	47' 0.5"	64'	63' 4"	80'	79' 7.5"	96'	95' 11"
16'	15' 5"	32'	31' 8.5"	48'	48' 0"	65'	64' 3.5"	81'	80' 7"	97'	96' 10.5"
17'	16' 4.5"	33'	32' 8"	49'	48' 11.5"	66'	65' 3"	82'	81' 6.5"	98'	97' 10"
18'	17' 4"	34'	33' 7.5"	50'	49' 11"	67'	66' 2.5"	83'	82' 6"	99'	98' 9.5"
19'	18' 3.5"	35'	34' 7"	51'	50' 10.5"	68'	67' 2"	84'	83' 5.5"	100'	99' 9"
20'	19' 3"	36'	35' 6.5"	52'	51' 10"	69'	68' 1.5"	85'	84' 5"	101'	100' 8.5"

# STANDARD WALL & PANEL SIZES

5' - 10"

6' - 9.5"

7' - 9"

8' - 8.5"

9' - 8"

10' - 7.5"

11' - 7"

12' - 6.5"

13' - 6"

14' - 5.5"

15' - 5"

16' - 4.5"

17' - 4"

18' - 3.5"

19' - 3"

20' - 2.5"

21' - 2"

22' - 1.5"

23' - 1"

24' - 0.5"

25' - 0"

25' - 11.5"

26' - 11"

27' - 10.5"

28' - 10"

29' - 9.5"

30' - 9"

## Standard Walk-In Heights, Floorless

6' 2.5"; 7' 2.5"; 8' 2.5"; 9' 2.5"; 10' 1.5"

## Standard Walk-In Heights, with Floors

6' 6.5"; 7' 6.5"; 8' 6.5"; 9' 6.5"; 10' 5.5"

## Maximum Panel Height

288" (24')

## Door Frames

46" with 30", 34", or 36" door

57.5" with 30", 34", 36", or 42" door

69" with 48" door

80.5" with 60" door

## Floor & Ceiling Mid Sections

11.5", 23", 34.5", 46"

## Floor & Ceiling End Sections

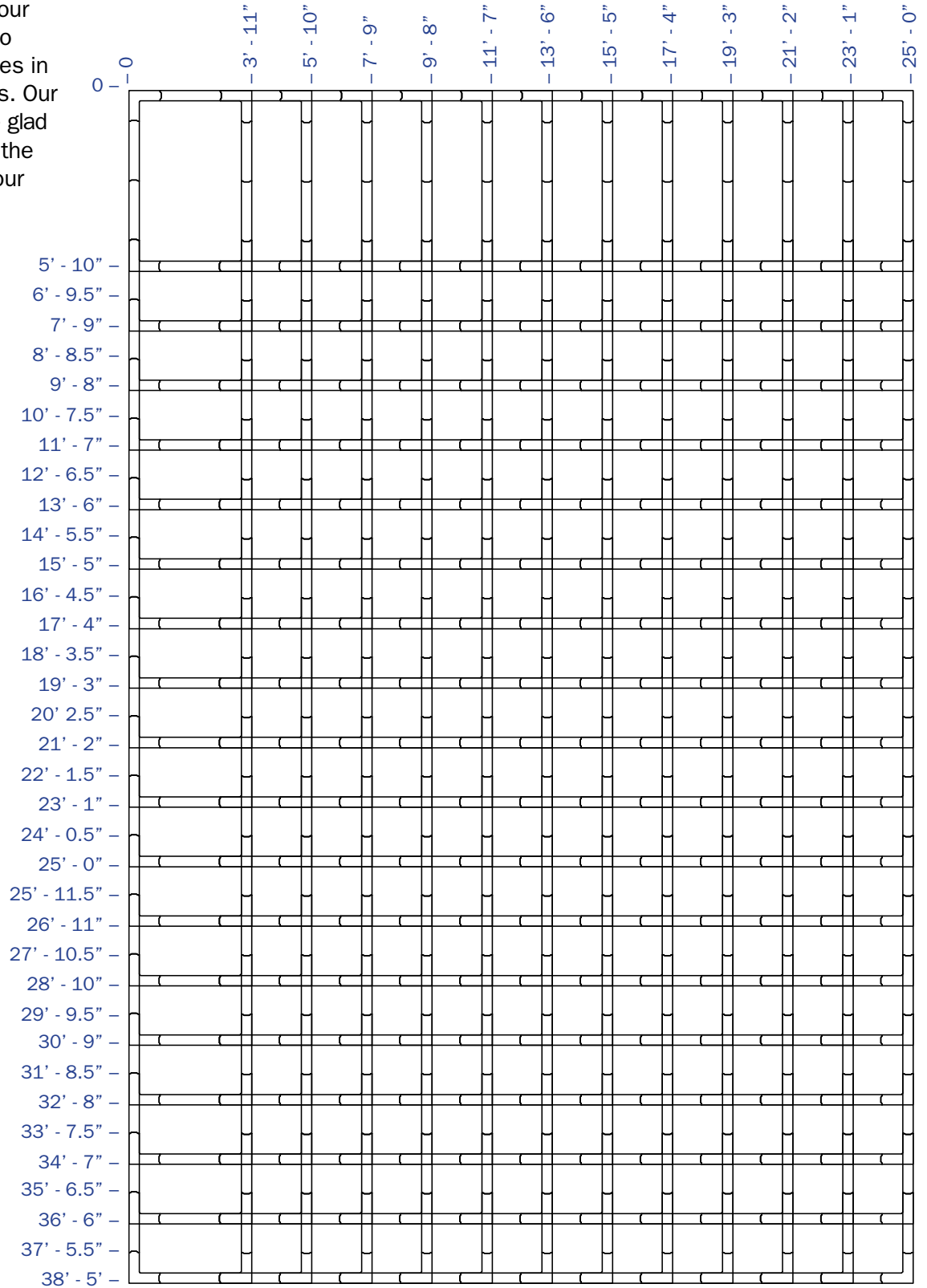
35"

## Corners

12" x 12"

# STANDARD BOX SIZES

Tafco boxes come in many standard sizes. Use the chart at the right to layout the correct size walk-in for your application. You may also request special size boxes in addition to our standards. Our Engineering team will be glad to assist you in designing the correctly sized box for your specific needs.

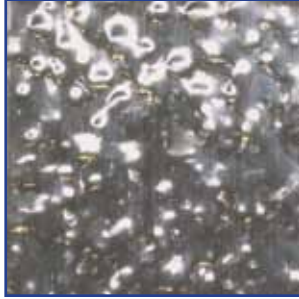


# WALK-IN FINISHES

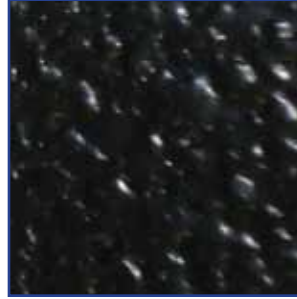
Tafco offers a variety of metal finishes to make your walk-in look exactly as you imagined. Below are samples of available finishes, which also include antimicrobial coated metals and FRP. For other options, please consult the factory.



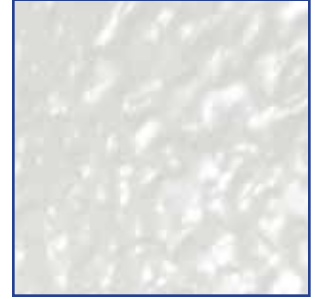
**.032 White  
Embossed Aluminum**



**24 Gauge Embossed  
Stainless Steel**



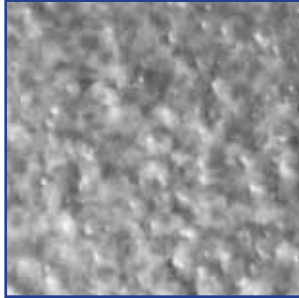
**26 Gauge Black  
Embossed  
Galvanized Steel**



**26 Gauge White Stucco  
Galvalume**



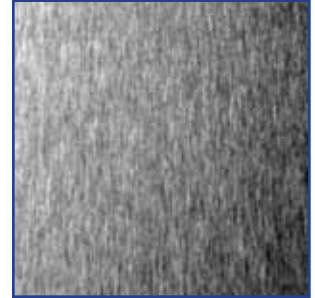
**26 Gauge San Tan  
Galvanized Steel**



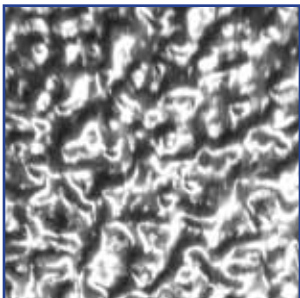
**26 Gauge  
Stucco Galvalume**



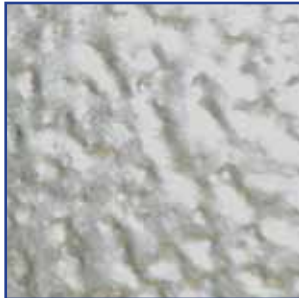
**.040 White  
Smooth Aluminum**



**22 Gauge Smooth  
Stainless Steel**



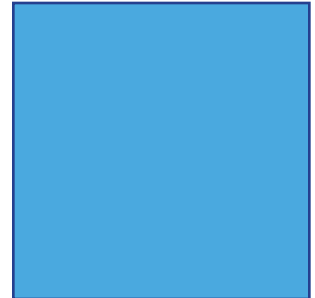
**.032 Embossed  
Aluminum**



**26 Gauge Stucco  
Galvanized Steel**



**Aluminum  
Diamond Tread**



**Painted Finish  
Any Color**

\*actual colors may vary

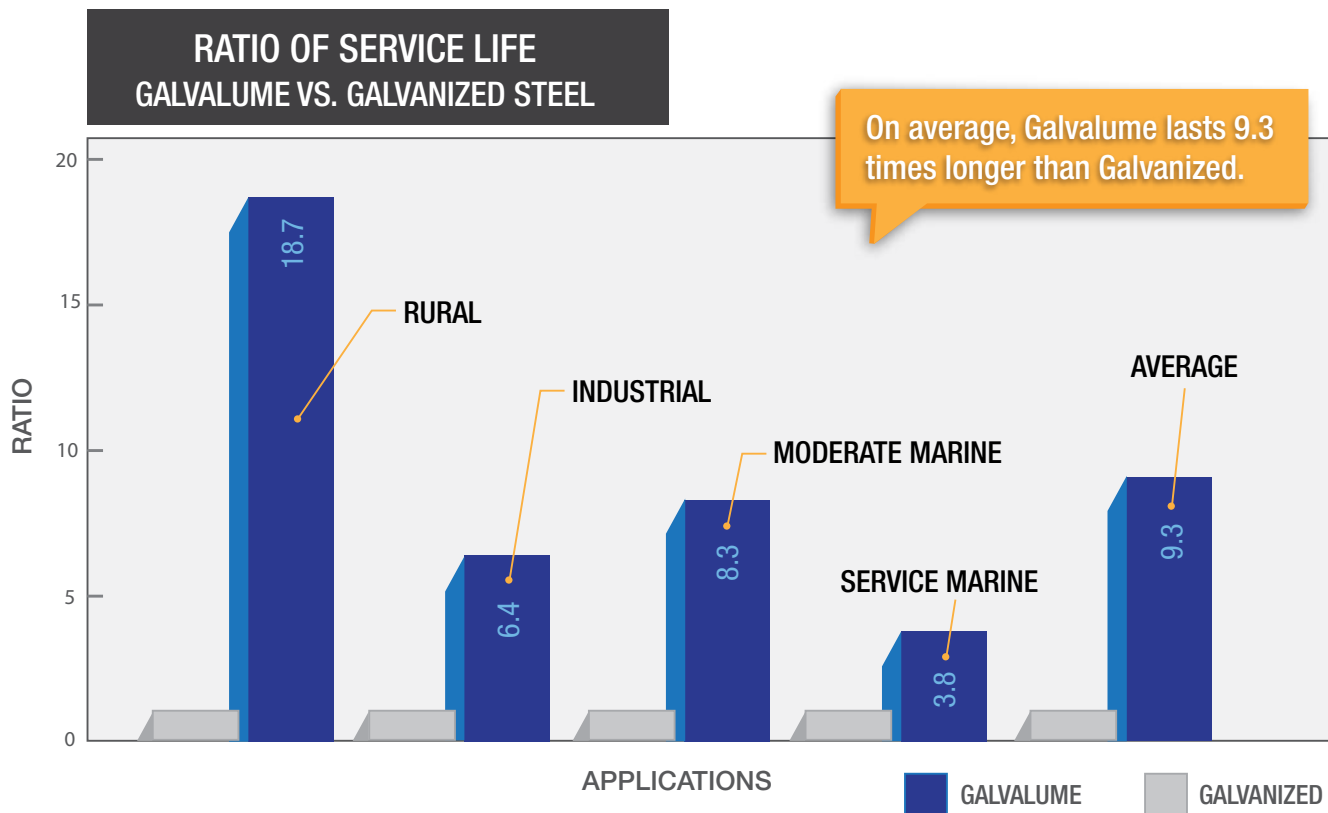
# GALVALUME

Tafco is proud to announce that we have transitioned to a superior coating in Q4, 2010 and Q1, 2011. Acrylic coated galvalume is an aluminum-zinc steel that provides extra corrosion protection when compared to galvanized steel.

Acrylic coated galvalume offers the best qualities of aluminum-coated (aluminized) and zinc-coated (galvanized) steels. It has barrier corrosion resistance and heat resistance similar to aluminized. It also has good bare edge galvanic protection and forming qualities like galvanized. Acrylic coated galvalume will resist rust, the elements, and fire while providing a sturdy and protective covering.

## Some of the advantages of acrylic coated galvalume, when compared to galvanized or aluminized steel, include:

- Resists finger, hand, and foot printing during installation
- Provides a bright appearance which will weather uniformly
- Has excellent resistance to darkening or staining
- Clear protective coating
- The metal skins come with a 20 year rust-through warranty



## An added advantage of galvalume verses galvanized or aluminized steel:

Galvalume's thermal reflectivity results in a 50% reduction in the heat from solar radiation penetrating the box, thus reducing thermal loads. In addition to reflecting heat away from the box, galvalume coating more efficiently retains the cold within the box when compared to galvanized steel.

# ANTIMICROBIAL

## How Antimicrobial Coating Works:

Tafco's antimicrobial coating, applied to the exterior of our refrigeration products, inhibits the growth of bacteria, molds, fungi, and other microbes, through the controlled release of silver ions. This provides continuous antimicrobial protection for the product for the life of the coating.

## Coating Life and Application:

The antimicrobial coating is applied as a clear paint system or a tinted system. Coating life is a function of the application and surface wear, but generally averages 10-30 years, depending on the wear the product experiences.

Note: Although silver ion is a powerful antimicrobial agent, the Tafco antimicrobial coating is not intended as a substitute for good cleanliness. Coated refrigeration products must still be cleaned to ensure that surfaces will be free of destructive microbes.

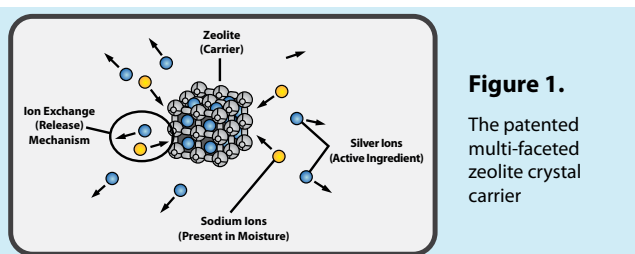
## Insulated Structure Applications:

Tafco's antimicrobial-coated steel adds value to your Insulated Structures. There is growing public awareness of destructive microbes. Many industries have attempted to address customer concerns regarding microbes. Tafco now provides this important value-added solution to the refrigeration system that you've invested in. Particularly, for those companies in the food services industry, the revolutionary antimicrobial protective coating is a must for food appliances and products, including your refrigeration system.

## Refrigeration:

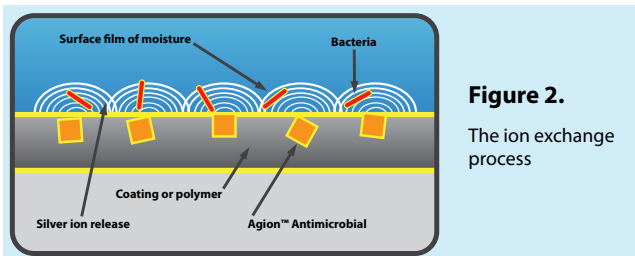
While temperatures below 40° F typically inhibit the growth of many microbes, even at colder temperatures, Tafco's antimicrobial coated steel works to inhibit these growths. In short, no matter what the environment, this coating makes a big difference with no process or operating changes.

**The world around us is full of microbes. While many are harmless, some can cause serious illness and disease. Molds and mildews can also cause costly damage to vital equipment. As a leader in high quality refrigeration systems and walk-ins, Tafco remains committed to progressive innovations in its products, as demonstrated by employing protective antimicrobial coatings.**



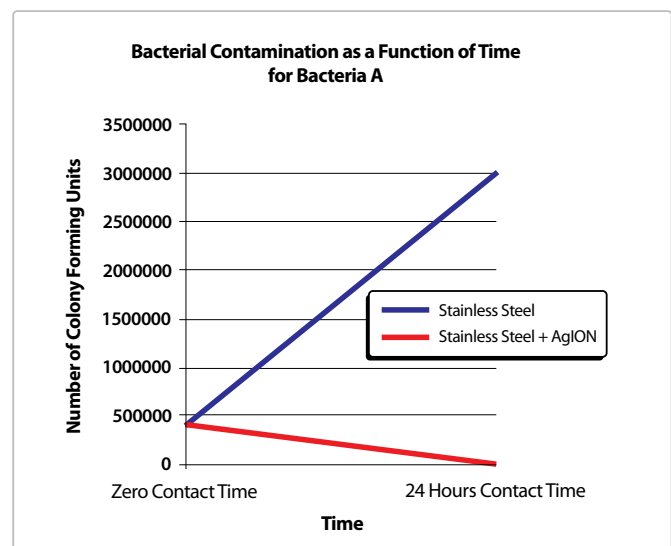
**Figure 1.**

The patented multi-faceted zeolite crystal carrier



**Figure 2.**

The ion exchange process



# QUALITY PRODUCTS & HIGH STANDARDS

## Quality Policy

“Our policy is to provide our customers with a quality product that fully satisfies their requirements. On-time delivery and conformance to requirements are constant objectives. We strive to continually improve the quality management system and all processes of the system. Employees are encouraged to initiate improvements and to participate in improvement activities. We are committed to fulfilling our commitment to our employees and community by maintaining a safe working environment and by meeting all statutory and regulatory requirements.”



## EISA Compliant

We take pride in providing our customers with products that are compliant with the Energy Independence and Security Act of 2007. This act was signed into law on December 19, 2007 and became effective January 1, 2009. Since this date we have shipped out only walk-ins that comply.



## Factory Mutual FM

Tafco panels are available with FM 4880 approval. FM Approved insulated panels have a flame spread of 25 and a smoke density of 400, subject to conditions described in FMRC Standard 4880.



## U.S. Green Building Council (USGBC)

USGBC has a mission to transform the way buildings and communities are designed, built, and operated, enabling an environmentally and socially responsible, healthy, and prosperous environment that improves the quality of life. Tafco is participating with the USGBC to help our customers attain LEED certification. LEED is an internationally recognized green building certification system, providing third-party verification that a building or community was designed and built using strategies aimed at improving performance across all the metrics that matter most: energy savings, water efficiency, CO2 emissions reduction, improved indoor environmental quality, and stewardship of resources and sensitivity to their impacts.



## NSF Certification

Tafco (TMP Manufacturing Company, Inc.) foodservice products are certified by NSF to NSF/ANSI Standard 7.



## U.S. Small Business Administration Hub Zone Certified

As of May 01, 2009, Tafco is a HUB Zone certified business approved under the North American Industry Classification System (NAICS) Code. The HUB Zone Empowerment Contracting Program stimulates economic development and creates jobs in urban and rural communities by providing Federal contracting preferences to small businesses. These preferences go to small businesses that obtain HUB Zone (Historically Underutilized Business Zone) certification, in part, by employing staff who live in a HUB Zone.



## Underwriters Laboratories UL

Building Units are UL Classified control number R8380 and have a flame spread of 25 and smoke development of 300. Door Panels are UL Listed control number E44455.

Tafco walk-ins are acceptable for use in accordance with the Report of Materials and Equipment Acceptance (MEA) Division of the City of New York Department of Buildings, approval number MEA 297-96-M.



## ISO 9001:2008 Certification

TAFCO (TMP Manufacturing Company Inc.) has achieved ISO 9001:2008 certification, the latest ISO standard designation. Tafco received its certificate from Bureau Veritas Group. This demonstrates Tafco's commitment to quality-of-service standards established by the International Organization for Standardization (ISO).

***Our products are made with pride in the USA.*** 

# WALK-IN DOOR & BOX ACCESSORIES

Tafco doors are among the best in the industry. Our doors are available in standard opening sizes of 30", 34", and 36", along with custom sizes as well. Tafco doors come with an assortment of accessories and options to meet your specific requirements. We also offer Manual and Electric, horizontal single, bi-parting sliding and vertical doors. Most accessories are also available with an antimicrobial coating.

## 1. Hinges

Standard hinges are self-lubricating, reversible, and very durable. They offer reinforcing ribs for extraordinary strength and are aesthetically pleasing. We offer many other hinge types as well.

## 2. Door Closer

Our standard door closer permits fast door closure to make sure the cold stays inside. Standard door closer is solid stainless steel throughout and is built for years of trouble-free use.

## 3. Pressure Relief Port (PRP)

A PRP is part of standard installation on all coolers and freezers to equalize pressure between the interior and exterior, caused by sudden pressure changes. The port allows doors to open and close with ease and reduces stress on walk-in joints.

## 4. Pull Handles & Latches

A standard heavy-duty, ergonomically designed pull handle allows comfortable, easy door opening. It features concealed, tamper-resistant mounting and is NSF listed. Pull handles are combined with a separately mounted locking hasp that provides optimum security and a glow-in-the-dark quick release, inside safety mechanism. We also feature locking pull handles and positive latch options.

## 5. Thermometer / Alarms / Motion Sensors / Switches

Standard thermometers and light switches feature LED displays with 1 second, 1 minute, or 3 minute display updates. They also feature an illuminated light switch, allowing operators to turn on the walk-in light easily. We also offer many different types of dial thermometers and switches including motion sensor, interval timer, alarm, light manager, fan control, and piloted flip.

## 6. Viewports

To allow easy visibility of your product through a Tafco door, we offer standard sized 14" x 14", 14" x 24", and custom size heated or unheated viewport windows. These viewports have tempered, triple-pane, moisture proof, clear glass viewing areas. They have fully welded PVC framing, which provides positive insulation barriers, eliminating heat transfer and sweating. Viewports are filled with Argon to comply with the Energy Independence and Security Act of 2007.

## 7. Tuffy Doors and Kickplates

Tuffy doors are meant for high-usage areas, and include a third hinge and kickplates on the interior and exterior of the door and frame. 1/8" or heavier kickplates can be provided on the interior and exterior of doors located in heavy traffic areas to protect the door from damage.

## 8. Exterior & Interior Ramps

To eliminate a step-up into the walk-in, a ramp can be installed. An interior ramp is available for limited, light duty, roll-in traffic. Exterior ramps can be removable and will not interfere with the interior storage area. Interior ramps are available when exterior space is limited. Ramps are also available for heavy duty use. Standard interior ramp sizes are 30", 34", 36", and 48" x 27" deep. Standard exterior ramp sizes are 30", 34", 36", and 48" x 32" deep.

# WALK-IN DOOR & BOX ACCESSORIES (CONTINUED)

## 9. Bumper Rail

To prevent damage to walk-ins in heavy traffic areas, we offer different types of bumper rails. They are available in extruded aluminum with a vinyl insert, hat-shaped, and triangular models in either stainless steel or aluminum.

## 10. Outdoor Membrane Roof (Flat or Sloped)

For walk-ins installed outdoors that need a waterproof seal, a membrane roof cap is available. It is constructed from a 1 mm thick Duro-Last single-ply roof membrane. Necessary installation instructions are provided.

## 11. Locking Bar

For better security, we provide an optional locking bar that connects to an inside safety release, which prevents anyone from being locked inside.

## 12. Strip Curtains

To lessen the amount of cold air that escapes while a cooler or freezer door is open for extended periods of time, strip curtains are available in various sizes. Strip curtains reduce energy consumption and the compressor workload, while helping to extend product shelf life by maintaining a more consistent temperature inside your walk-in. In addition, we also offer Clear Vu swing doors for the interior opening. Clear Vu doors extend compressor life and help maintain a constant box temperature. They are not affected by moisture and will not drag over carried items.

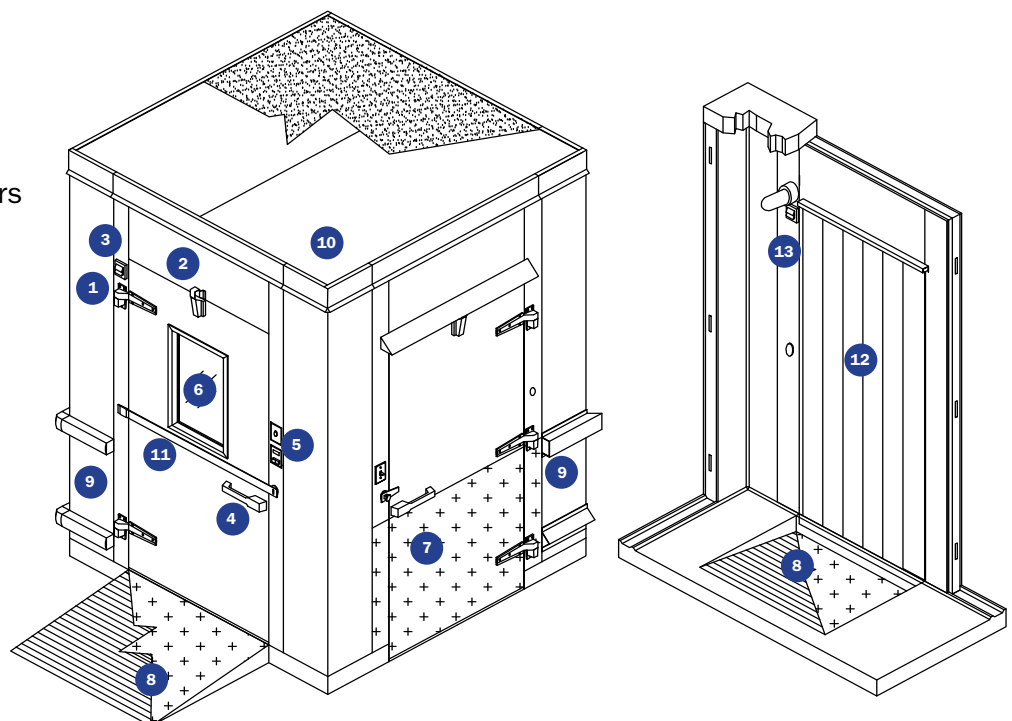
## 13. Lighting

Tafo offers many different lighting solutions to meet your specific lighting needs. We offer incandescent, fluorescent, and LED lighting at the doors. The fluorescent and LED lighting options are available in 4' lengths.

## Other Walk-In Accessories

(Consult Factory for more information)

- Manual Sliding Doors
- Electric Sliding Doors
- Bi-Parting Doors
- Glass Man Doors
- Sliding Glass Doors
- Stationary Windows
- GFI Outlets
- Outdoor Rainhoods & Switch Covers
- Inner Door Seal Kits
- Inswing Doors
- Foot Treadles
- Glass Display Doors with Flat or Gravity Feed Shelving



# NEW DOORS AND FRAMES

Tafco's newest design of doors and frames has a host of advantages when compared to other designs. Below are some of these advantages.

## Door Improvements:

Fiberglass Reinforced Plastics (FRP) in the door perimeter transfers 475% less heat or cold than the Polyvinyl Chloride (PVC) it is replacing. Additional energy savings are realized when compared to doors and frames that use metal in their perimeters. FRP offers a stronger, more durable, corrosion and temperature-resistant product versus doors and frames containing metal and/or PVC.

- The connection strength of the backing plates to the door and frame has been increased, thus increasing the overall door and frame strength.
- FRP adds significant rigidity to the door, when compared to either steel or PVC perimeters.
- The new bottom sweep gasket has a built in retainer for easy replacement.
- The magnetic gasket design has been changed to add rigidity and durability.
- Available with a new heated door option for specifications that require it.
- Doors will function up to 200 degrees if ordered with high temperature gaskets.

## Door Frame Improvements:

- The new pressure relief port, standard on freezers, not only uses just 17% of the energy of the old standard, but actually equalizes the box faster than before.
- Standard toggle switch and dial thermometer has been replaced with a switch with a built-in digital thermometer.
- All wiring is pulled to one point for ease of installation.
- At Tafco, we have evolved to brushed hardware, on both doors and frames.

## Additional Energy Saving Options:

- LED lighting uses 50% less energy, generates 87% less heat, and last up to 6 times longer than compact fluorescents.
- Vinyl strip curtains reduce infiltration rates by 75% and vinyl strip doors reduce them by 95%\* \*(Numbers from the Refrigeration & Thermal Test Center of Southern California Edison).

## Switch Features & Options:

### Motion Sensor Switch

- Lighting only stays on when the box is occupied.

### Alarm and Light Manager

- Notifies if door is left open or temperature in box rises too high or low.
- Turns lights on when door is open, and off by timer with a flashing notification before they go out.
- Comes with battery backup, has built in buzzer, plus alarm contactor.
- Options include: panic alarm, external strobe light, external buzzer, gas leak detector, refrigeration current monitor, and remote auto-dialer.

## Future Enhancements:

- New Optional FRP Kick Plates on Doors and Frames.



# NEW THRESHOLDS

## Additional Features & Benefits of FRP Frame:

The FRP frame reduces thermal conductivity by over 500% allowing for no heat to be used in the frame for coolers. This results in an annual energy savings of over \$93 per year at .11/kwh average national commercial electric rate. This also allows for no sills to be required for boxes without floors and, therefore, a smooth entry into boxes.

The new FRP frame, with our new PVC sill plate, allows the heat of the frame to be reduced significantly, resulting in about a 50% savings. The new sill plate transfers 84 times less heat than the old stainless steel plate and, at the same time, handles weight better since it can flex more than a steel frame.

## PVC Threshold



## Stainless Steel Threshold



**The pictures above depict the relative strength of the PVC Threshold vs. the Stainless Steel Threshold.**

We first anchored both types of thresholds to a board as shown in the “before” photos. We then proceeded to drive our 12,100 pound box truck over both thresholds as shown in the “during” photos. As you can see in the “during” photos where the truck tire is on top of the thresholds, the PVC slightly deflected but the stainless steel flattened out almost completely. Also, as shown in the “after” photos, the PVC fully recovered, but the stainless steel only partially recovered. This extreme test shows that the PVC threshold outperformed the stainless steel threshold.

# SWITCHES

## “Greener” Solutions for Walk-In Switches!



### Motion Sensor Switch

Tafco's newest, commercial grade motion sensor provides the customer with the convenience of automatically being able to turn on the lights without the hassle of flipping a switch. This sensor knows when the walk-in door has been opened and automatically turns the light on for you. Turning the light on is as simple as entering the walk-in. A programmable timer allows you to decide how long you want the lights to remain on after movement in the walk-in has stopped. This option is a great way to save on energy, while at the same time providing convenience and safety for the user.



### Interval Timer Switch

Our new interval switch timer eliminates wasted energy when the lights are left on accidentally. Simple settings shut the lights off at a pre-set interval. The interval can be set to as short as one minute and as long as 18 hours. The switch has been designed with a warning light that flickers before the lights turn off. This allows enough time to reset the timer, assuring you that you will never be left in the dark. The timer switches are tamper-proof because they have a hidden dial. You decide how long the lights stay on and ultimately decide how much energy you save.



### Alarm & Light Manager

The alarm and light manager eliminates the problem of the lights being left on and doors being left open, wasting precious energy dollars. The manager includes high temperature, low temperature, door open, and panic alarms. The switch has been designed with a warning light that flickers before the lights turn off. It also has a built-in light switch which includes an automatic shut-off option. This provides a perfect solution to losing precious energy and money.



### Combo Light Switch & Thermometer

This combination light switch and thermometer comes complete with an easy-to-read temperature display, that can read both the Fahrenheit and Celsius scales. The waterproof elbow flip switch allows the user to turn the light on and off easily, even if they do not have a spare hand. The switch also illuminates when it is switched into the “on” position.



### Switch with Indicator

This piloted light switch includes a standard flip switch and indicator light. It is easy to use as well as economical.

# LIGHTING

## Flip the Switch to “Greener” Walk-In Lighting!

Tafco has made the “switch” to smarter, more efficient, environmentally-friendly lighting! Light-Emitting Diodes (LEDs) are state-of-the-art and the most efficient way to provide superior lighting to walk-in coolers and freezers. While Tafco has made the switch to LED, fluorescent lights are still available. Ask your Tafco rep what’s right for your particular situation.

## Smarter Lighting!

There are a host of advantages that LED lights have over incandescent and fluorescent lighting. In fact, it is an altogether different type of lighting. The LED does not contain mercury, so is a much safer lighting method. It does not produce ultraviolet radiation, nor does it contain any harmful gases. In addition to all of these great environmental advantages, the LED also results in energy and cost savings for the user. The chart below compares LEDs to other types of standard walk-in lighting options. This clearly shows that there is no comparison!

Advantages	LEDs	Fluorescents	Incandescents
Watts Used	13 watts	26 watts	100 watts
Annual Operating Cost	\$7.96/yr	\$15.92/yr	\$61.26/yr
Heat Emitted	7.4 BTUHs	55.7 BTUHs	141.7 BTUHs
Life Span	50,000 hrs	8,000 hrs	1,200 hrs
Slow Start	No	Yes	No
Turns on Instantly	Yes	No	Yes
Contains Mercury	No	Yes	No



Fluorescent shown without globe

4' LED Lighting

# TAFCO VALUE (V) SERIES

**The Tafco Value (V) Series is the most economical of the Tafco Refrigeration Systems. This conventional “mid-level” model is reasonably priced, while offering a host of extra features. It is also more highly energy efficient when compared to other models.**

The Tafco Value (V) Series is built for high efficiency, lower compressor sound levels, and a compact low silhouette profile. The Value (V) Series is built like conventional outdoor systems. This series is available in both remote and pre-charged systems. Since all parts are mounted, installation is more efficient and cost effective. The Value (V) Series comes with a 1 year warranty on parts and 60 days on labor.

## **Pre-Assembled Condensing Units Consist of the Following Parts Mounted:**

- Copeland R404A hermetic, semi-hermetic, and scroll compressors
- Weather proof control panel and housing with raised base
- Copper tube, aluminum fin condenser
- PSC condensing fan motors use 30% less electricity than shaded pole motor
- High and low pressure controls
- Liquid line assembly, dryer, sight-glass, piping to outside
- Oil pressure control, where applicable
- Suction and liquid service valves
- Flooded condenser head pressure control
- Receiver with outlet shut-off valve
- Mounted electric defrost time clock in freezers
- 115 V air defrost time clocks, shipped loose
- Suction line assembly, filter, piping to outside
- Vibrasorbers (semi-hermetic models only)



## **Pre-Assembled Evaporators Consist of the Following Parts Mounted:**

- Matching low profile evaporator to condensing unit
- Expansion valve
- Liquid line solenoid
- Mechanical thermostat
- ECM evaporator fan motors: 115 V coolers and 220 V freezers
- ECM evaporator fan motors use 71% less electricity than shaded pole motors
- Electric defrost freezer evaporators, 220 V
- Air defrost cooler evaporators, 115 V



**Evaporator shown above with Electronic Expansion Valve Option**

**Pre-Assembled System Options:**

- Dual matching evaporators
- Oversized receivers
- Insulated and heated receiver
- Hot gas bypass, requires hot gas line to evaporator
- Copper finned and copper pipe condenser coil
- Copper finned and copper pipe evaporator coil
- Receiver relief valve in lieu of fusible plug

**Pre-Assembled System Options (continued):**

- Oil separator
- Suction accumulator
- AST condensing coil coating
- AST coating evaporator coil

**Pre-Charged Units Add the Following:**

- The Correct refrigerant charge in the receiver for the system
- Single use quick connect fittings mounted to the evaporator(s) and condensing unit
- Refrigeration line set: 10', 20', 30', 40', and 50'
- Evaporator voltage matches the condensing unit voltage
- Wiring harness

\*All Tafco Refrigeration Systems meet or exceed the 2007 EISA standards.

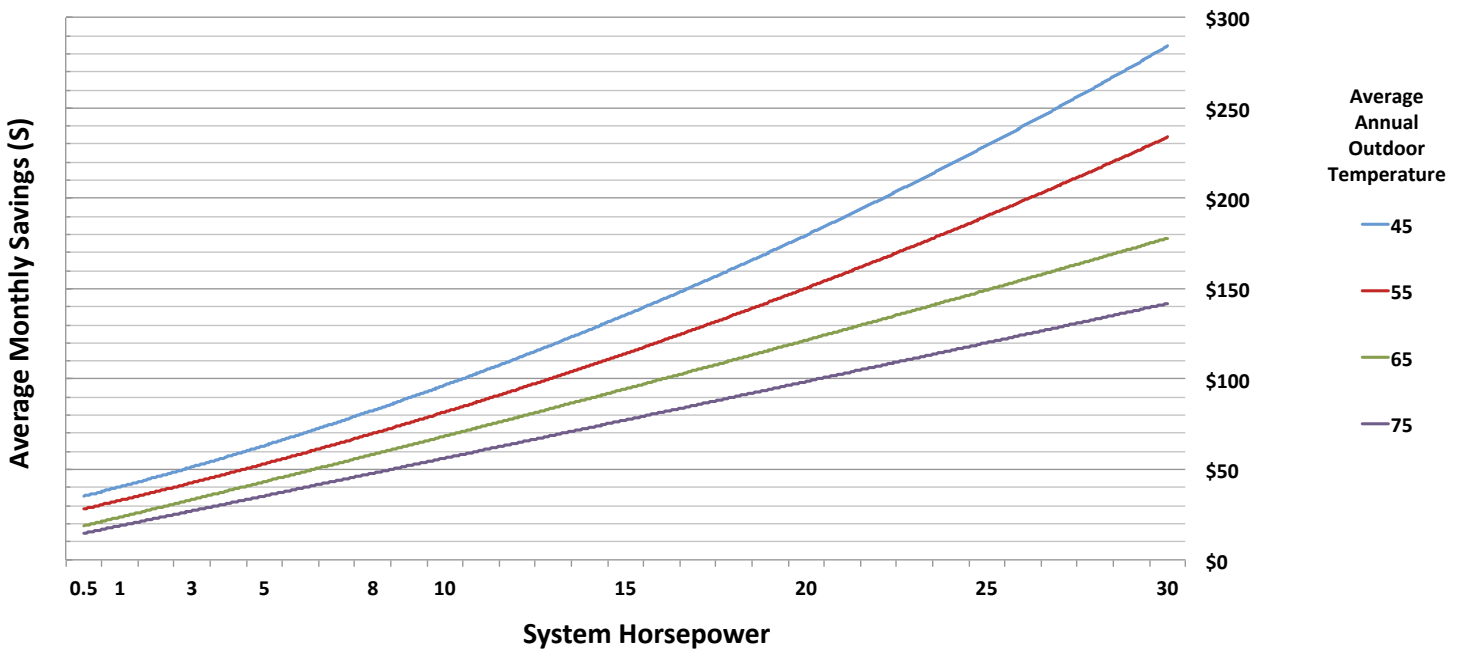
# TAFCO E (ECO) SERIES

**The Tafco E Series is the most energy efficient, for the capital expenditure, of the Tafco Refrigeration Systems. Customers will realize the quickest return on investment with the purchase of this system.**

The Tafco Eco (E) Series is our most energy efficient system for your money. The Tafco Eco Series comes with a 1 year warranty on parts and 60 days on labor. The system incorporates a number of features which enhance performance, provide energy savings over our Tafco Value Series, and increase reliability, thus saving you money. This is done by a design that eliminates the need for a refrigerant receiver by providing built-in storage capacity in the condenser section of the condensing unit. This small change allows for the addition of new features that are not possible in the traditional refrigeration systems. It actually gives the same size condenser up to 20% more capability by providing a potential 50% increase in condenser surface. This feature increases compressor size and lower operating pressure provides an initial energy savings of up to 10%. This feature provides 30% in additional energy savings during low ambient conditions. Additionally, it also supplies sub-cooled liquid refrigerant to the expansion valve to maintain optimum valve performance.

Tafco Eco Series systems can offer energy savings of up to 40% over conventional refrigeration systems (see graph below). Tafco Eco Series systems require up to 20% less refrigerant to operate, while maintaining continuous peak performance. In typical systems, the receiver, its outlet valve, and piping will create bubbles in the sight-glass due to the pressure drop they create. By eliminating the receiver and its piping components, the clearing of the sight-glass occurs much faster and with less refrigerant. The E Series sight-glass signals when the ideal charge has been attained, thus saving refrigerant and its cost.

**TAFCO ECO SERIES PROJECTED MONTHLY SAVINGS @ \$0.10/KWH**



### **Pre-Assembled Condensing Units Consist of the Following Parts Mounted:**

- Copeland semi-hermetic, hermetic, discus, or scroll compressors
- Oil pressure control, where applicable
- High and low pressure controls
- Crankcase heater
- Low profile galvanized steel housing
- Fan cycle control (dual fan condensing unit only)
- Electric defrost provisions on low temp evaporator(s)
- 115 V air defrost clock, shipped loose
- Floating head pressure control
- Copper tube, aluminum fin condenser
- Vibrasorbbers (semi-hermetic models only)
- Large electrical control panel
- Compressor contactor or start kit
- Liquid line charging valve
- Liquid line filter-dryer
- Sight-glass with moisture indicator
- Suction line filter
- Liquid refrigerant sub-cooling circuit



### **Pre-Assembled Evaporators Consist of the Following Parts Mounted:**

- Matching low profile evaporators
- Specially sized balanced port expansion valve(s)
- ECM evaporator fan motors: 115 V coolers and 220 V freezers
- ECM evaporator fan motors use 71% less electricity than shaded pole motors
- Freezer evaporators are electric defrost 220 V
- Cooler evaporators are air defrost 115 V
- Liquid solenoid valve(s)
- Mechanical room thermostat

### **Pre-Assembled System Options:**

- Copper finned condenser and evaporator coils
- AST coated condenser and evaporator coils
- Adjustable defrost controls
- Suction accumulator
- Oil separator
- Electronic controls
- Remote monitoring and control



### **Pre-Charged Units Add the Following:**

- Correct refrigerant charge in the system
- Reusable quick connect fittings mounted to the evaporator(s) and condensing unit
- Refrigeration line set: 10', 20', 30', 40', and 50'
- Evaporator voltage matches the condensing unit voltage

\*All Tafco Refrigeration Systems meet or exceed the 2007 EISA standards.

# TAFCO U (ULTRA) SERIES

**The Tafco U Series is a premium model that is the most energy efficient of the Tafco Refrigeration Systems. The return on investment over the long run, in energy efficiency, is greatest with this system.**

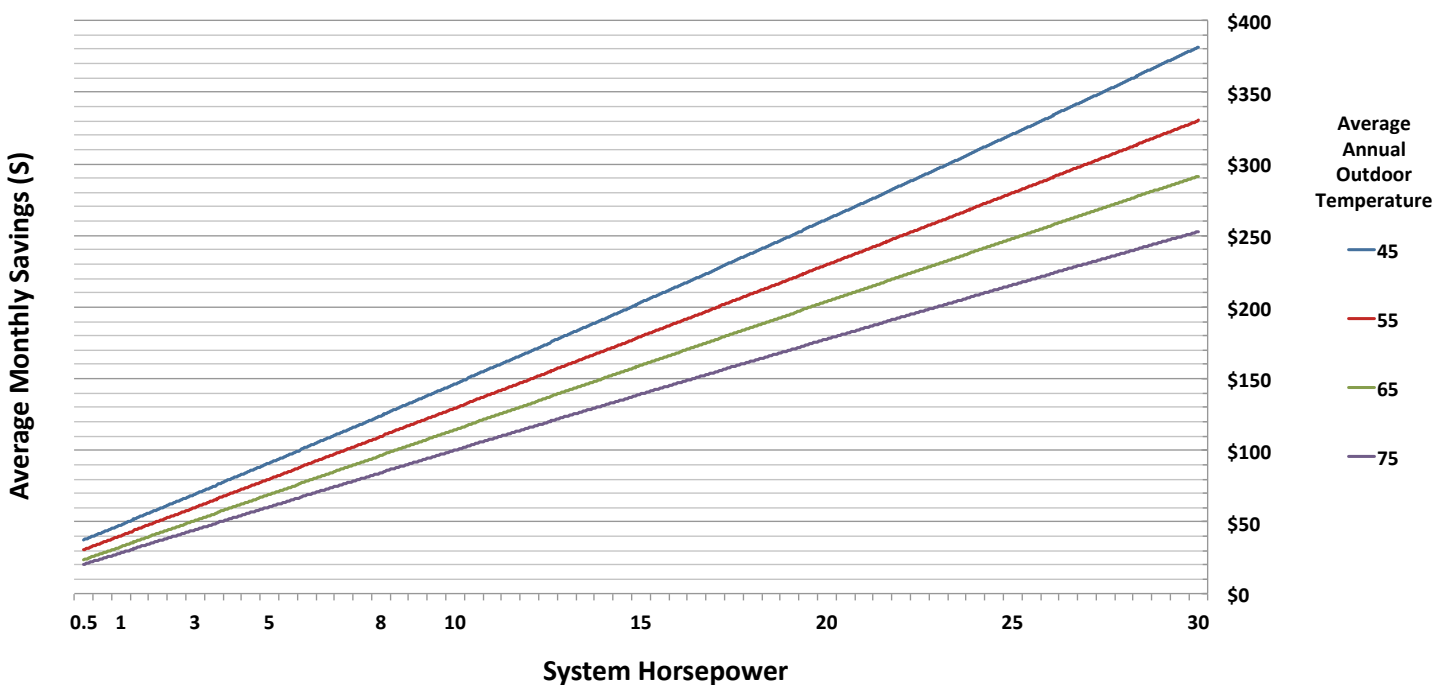


The Tafco Ultra (U) Series has all the advanced features of the Tafco Eco (E) Series, plus ECM fan motors that use 71% less electricity than shaded pole motors, digital controls, and hot gas defrost, with demand defrost on the freezers, thus providing the ultimate in energy savings. These defrost four times faster than comparable electric defrost freezer systems. This prevents both unnecessary defrosts and steaming. This can avoid unsafe and costly ice formation on the floors, walls, and ceilings.

The Tafco Ultra Series comes with a one year warranty on parts and 60 days on labor. The system incorporates a number of features which enhance performance, provides additional energy savings, and increase reliability over all of our other systems, thus saving you money. The design of this series eliminates the need for a refrigerant receiver by providing built-in storage capacity in the condenser section of the condensing unit. This small change allows for the addition of new features that are not possible in the traditional refrigeration systems. It actually gives the same size condenser up to 20% more capability by providing a potential 50% increase in condenser surface. This feature increases compressor size and lower operating pressure provides an initial energy savings of up to 10%. This feature provides 30% in additional energy savings during low ambient conditions. Additionally, it also supplies sub-cooled liquid refrigerant to the expansion valve to maintain optimum valve performance.

Tafco Ultra Series systems can offer energy savings of up to 50% over conventional refrigeration systems (see graph below). Tafco Ultra Series systems require up to 20% less refrigerant to operate, while maintaining continuous peak performance. In typical systems, the receiver, its outlet valve, and piping will create bubbles in the sight-glass due to the pressure drop they create. By eliminating the receiver and its piping components, the clearing of the sight-glass occurs much faster and with less refrigerant. The Tafco Ultra Series sight-glass signals when the ideal charge has been attained, thus saving refrigerant and its cost.

**TAFCO ULTRA SERIES PROJECTED MONTHLY SAVINGS @ \$0.10/KWH**



### **Pre-Assembled Condensing Units Consist of the Following Parts Mounted:**

- Copeland semi-hermetic, hermetic, discus, or scroll compressors
- Oil pressure control, where applicable
- High and low pressure controls
- Crankcase heater
- Low profile galvanized steel housing
- Fan cycle control (dual fan condensing unit only)
- 115 V air defrost clock shipped loose
- Floating head pressure control
- Copper tube, aluminum fin condenser
- Vibrasorbers (semi-hermetic models only)
- Large electrical control panel
- Compressor contactor or start kit
- Liquid line charging valve
- Liquid line filter-dryer
- Sight-glass with moisture indicator
- Suction line filter
- Liquid refrigerant sub-cooling circuit
- Freezer adds reverse flow defrosts
- Digital temperature and defrost controls with demand defrost



### **Pre-Assembled Evaporators Consist of the Following Parts Mounted:**

- Matching low profile evaporators
- Specially sized balanced port expansion valve(s)
- ECM evaporator fan motors: 115 V coolers and 220 V freezers
- True hot gas freezer evaporators. These evaporators do not require any electric heaters for defrosting the coils or the drain pan. 100% of defrosting is from hot gas. Use of these coils results in extremely fast defrosts with no steaming.
- Liquid solenoid valve(s)
- Digital room thermostat
- Cooler evaporators are air defrost

### **Pre-Assembled System Options:**

- Copper finned condenser and evaporator coils
- AST coated condenser and evaporator coils
- Adjustable defrost controls
- Suction accumulator
- Oil separator
- Remote monitoring and control



### **Pre-Charged Units Add the Following:**

- Correct refrigerant charge in the system
- Reusable quick connect fittings mounted to the evaporator(s) and condensing unit
- Refrigeration line set: 10', 20', 30', 40', and 50'
- Evaporator voltage matches the condensing unit voltage

\*All Tafco Refrigeration Systems meet or exceed the 2007 EISA standards.

# TAFCO P (T-PAK) SERIES

**The Tafco P Series is a great option for those who are looking for a near turnkey solution. These units are pre-built, pre-tested, and relatively easy to self-install.**



The Tafco P (T-Pak) Refrigeration System is a self-contained, drop-in refrigeration unit. It comes fully assembled and ready to mount in your walk-in cooler, allowing for quick installation times and minimal labor costs. Most units are supplied with a power cord so you can simply plug it in and begin cooling quickly, with no wiring or piping required. Since it comes fully assembled, there are no loose components to install. These units are factory evacuated, charged, and run tested to ensure reliable performance when they reach your location. The supply/return register mounts flush within the ceiling panel and provides for more storage in your walk-in cooler or freezer.

## **Reasons the Tafco P (T-Pak) Series is a Great Solution for Your Walk-in Cooler Needs:**

- Top mounted
- Indoor and outdoor units
- All-in-one refrigeration system
- Shipped factory assembled and tested
- No piping or loose components to install
- Factory evacuated, charged, and run tested
- Adjustable digital electrical controller comes preset for typical cooler or freezer applications
- Installs in a fraction of the time of a typical split refrigeration system
- Condensate evaporated on indoor models so no drain line is required
- Drain line heater provided for outdoor models
- HACCP compliant controls
- Electronically commutated evaporator fan motors use 71% less electricity than shaded pole motors
- 2 year warranty on all parts

## **Standard Indoor Features:**

- Insulated evaporator housing, mill finish aluminum
- Fully charged and run tested
- Evaporative drain pan (no drain line needed)
- Electronic controller
- Filter and dryer, sight-glass and TXV
- "UL sanitation" approved
- Attached power cord on most indoor models

## **Standard Outdoor Features:**

- Most features identical to indoor models, plus:
- All-weather roof
- Drain line with heater
- Crankcase heater

(Outdoor models not equipped with a condensate drain pan)



\*All Tafco Refrigeration Systems meet or exceed the 2007 EISA standards.

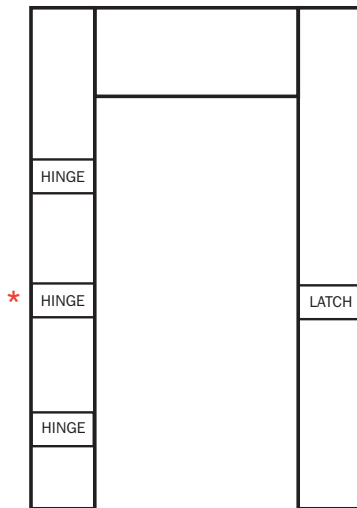
# RETROFIT DOORS & FRAMES

## TAFCO Replacement Insulated Doors & Frames

Cooler doors and frames are subject to more punishment than any other part of the walk-in. They can end up being badly damaged after years of wear. When you are in need of a replacement Tafco cooler door or frame, we are usually able to manufacture a replacement using the serial number on the box. If this information is not available, we have a replacement cooler door and frame detail page that can be filled out and sent to us. If you have a cooler door or frame in need of repair that is not a Tafco cooler, we are able to fit it with a retrofit overlap door.

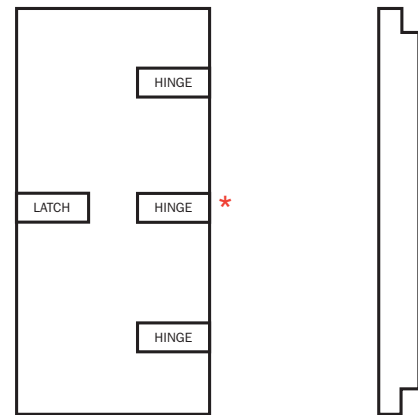


**REPLACEMENT FRAME DETAIL**



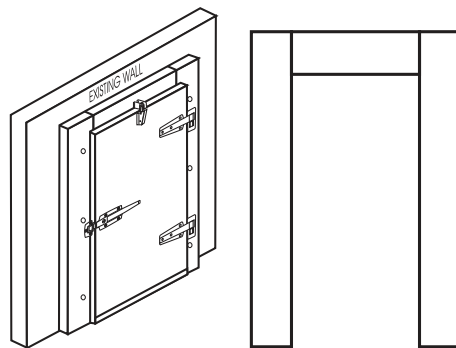
\*3rd Hinge Optional

**REPLACEMENT DOOR DETAIL**




---

## OVERLAP DOOR WITH JAMB

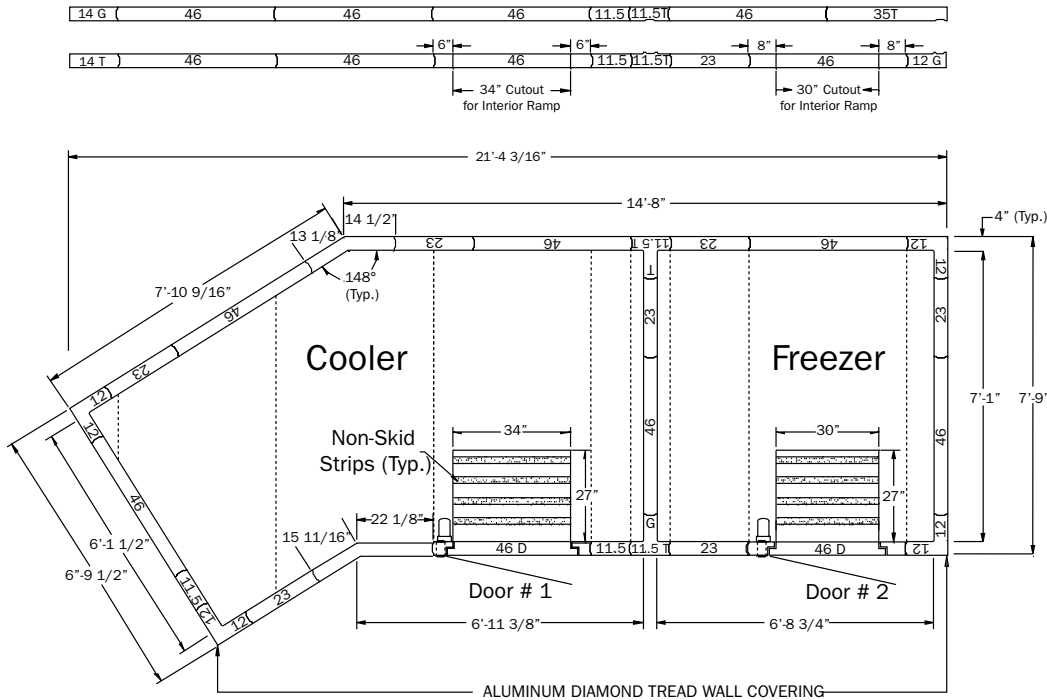


Please visit our website @ [www.walkins.com](http://www.walkins.com) (Products/Replacement Doors page) to obtain full versions of the Doors and Frames detail sheets/order forms for submittal.

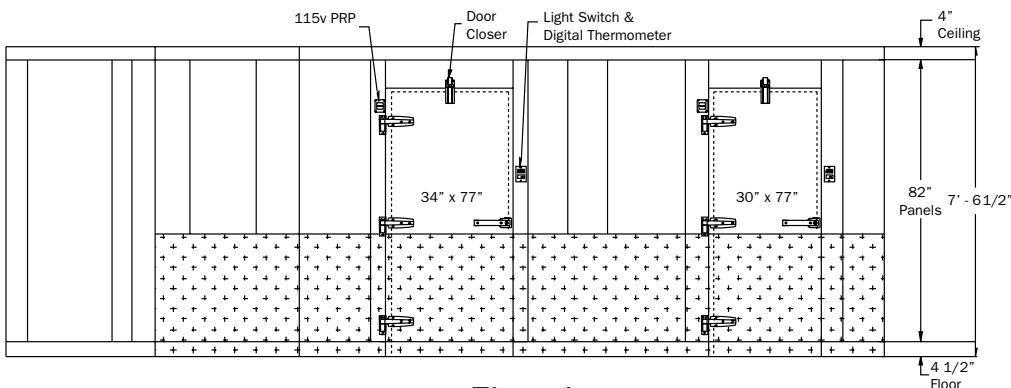
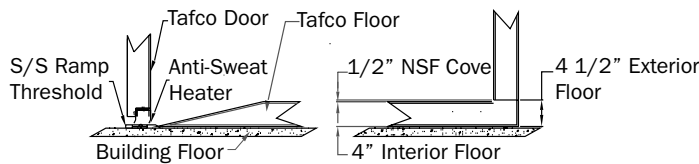
# ENGINEERING CAPABILITIES

At Tafco, we are a solutions-based company. We take great pride in developing solutions for our customers, drawing upon our years of engineering experience and expertise, and backed by responsive customer service. We have been a provider of high quality walk-in boxes for over 50 years. Working closely with our customers, the Tafco Engineering Department will design the perfect box for your particular application. We always keep your budget in mind, eliminating any unnecessary costs to manufacture the most cost effective solutions for our valued customers. Our Engineering staff has an average of 12 years experience in this industry and, time and again, have effectively tackled a wide range of challenges in producing the right walk-in for every situation.

## STANDARD BOX WITH ANGLED WALLS



Floor Type 1 with Internal Ramp



Elevation

For more information, including more information on our capabilities and services, please visit our website at: [www.walkins.com](http://www.walkins.com)

# CUSTOMER SERVICE

In addition to our engineering expertise, we ensure that our customers are completely satisfied with the products they receive through our highly skilled and caring Customer Service Department. Our people work together to always ensure a favorable outcome with every customer. Our Sales, Quotation, Engineering, and Customer Service teams are always available to speak to our customers about any questions or concerns that you may have. We take great pride in being able to respond quickly and knowledgeably to our customers, from start to finish, and in ongoing service to our customers. Responsive customer service allows us to deal quickly with any issue that may arise, large or small.

## Some of Our Nationally Known Installations

- The White House, Washington, DC
- PNC Ball Park, Pittsburgh, PA
- Navy Annex, Washington, DC
- VA Hospital, Philadelphia, PA
- Maricopa Prison, Maricopa, AZ
- Columbia University, New York, NY
- University of California, Irvine, CA
- Genetech, Louisville, KY
- University of New Mexico, Albuquerque, NM
- University of Oklahoma, Oklahoma City, OK
- American Red Cross, Johnstown, PA
- American Red Cross, Atlanta, GA
- Cornell University, New York, NY
- Children's Hospital, Philadelphia, PA
- New York University, New York, NY
- Maumee State Park, Maumee, OH
- Yankee Stadium, New York, NY
- Federal Correction Institution, Manchester, KY
- United States Soldiers' Home, Washington, DC
- Merck Pharmaceuticals, Rahway, NJ
- University of Notre Dame, South Bend, IN
- Trumbull Correction Facility, Leavittsburg, OH
- Green County Correctional, Waynesburg, PA
- Allenwood State Prison, Allenwood, PA
- Somerset State Prison, Somerset, PA
- Coal Township State Prison, Shamokin, PA
- The Cleveland Stadium, Cleveland, OH
- Penn State University, State College, PA
- University of Alaska, Anchorage, AK
- University of Tennessee, Knoxville, TX
- Dunkin Donuts, Various – Chain
- Kentucky Fried Chicken, Various – Chain
- Burger King, Various – Chain
- Arby's, Various – Chain
- Carvel, Various – Chain
- Eat & Park, Various – Chain
- Long John Silvers, Various – Chain
- Red Lobster, Various – Chain
- Checker's Drive Thru Restaurant, Chicago, IL
- Four Seasons, Pittsburgh, PA
- Westin Hotel, San Francisco, CA
- Buffalo Hotel, Buffalo, NY
- Omni Hotel, Philadelphia, PA
- Nittany Lion Inn, State College, PA
- Jefferson County Schools, Louisville, KY
- New York, New York, Las Vegas, NV
- Bruster's Ice Cream, Various – Chain
- Days Inn, State College, PA
- Holiday Inn, Waterloo, NY
- North Hills High School, Pittsburgh, PA
- Warren East High School, Venice, FL
- Shelby County High School, Shelbyville, KY
- Texas Road House Restaurants, Various – Chain
- Wayland School, Centerville, VA
- Oahu Care, Honolulu, HI
- Mrs. Baird's Bakery, Various – Chain
- Rax Roast Beef, Various – Chain
- Ground Round, Various – Chain
- Kroger Company, Various – Chain
- I Can't Believe It's Yogurt, Various – Chain
- Italian Oven, Various – Chain
- Andrews Air Force Base, Washington, DC
- Fort Bragg, Fayetteville, NC
- Fort Bliss, Fort Bliss, TX
- Fort Ord, Seaside, CA
- Bagel Boss, Brooklyn, NY
- Osan Air Base, Osan, South Korea

# INSTALLATION & DELIVERY

Tafco has manufactured high-quality, energy-efficient walk-ins for over 50 years. We are keenly aware of how important it is to get your installation done right, the first time, every time. Our team of factory employed service technicians, and factory trained sub-contractor partners from across the U. S. and Canada, manage the delivery and installation process of your new equipment every step of the way. When an installation is done efficiently and correctly, the life of your walk-in is increased, energy costs are reduced, and you get years of trouble-free operation.

## Benefits for Dealer/Reps

- Efficient Delivery and Installation
- Nationwide Delivery and Installation by Tafco People
- Single Source from Manufacturing to Completed Installation
- Smooth Start-up = Happy Customers
- Reduction in Warranty Issues
- Affordable Installations
- Faster/Better Service Support for Your Customers

## Benefits for End Users

- Smooth, No-hassle Installation
- Lower Overall Acquisition and Start-up Costs
- Longer Life of Walk-in
- Lower Energy Costs
- Reduction in Warranty Issues
- Affordable Installations
- Local Tafco Approved Service Technicians for Going Forward Care

## Tafco: Installation & Service Experts for Your Walk-In

Tafco's installation and delivery process is a real bonus for our customers. Tafco's trucks delivery your walk-in direct to the job-site, assuring we adhere to your scheduled delivery of the complete walk-in unit. The unit is carefully loaded and unloaded by Tafco authorized personnel avoiding any potential mishandling by a common carrier. This process also eliminates the need for expensive crating, and crating disposal.

Installations range from general box erection to complete turn-key. Our people are specially trained in both refrigeration and panel installation, thus we provide a total cold storage solution to your installation. And with Tafco, you'll work with a single point of contact throughout the installation and delivery process.

**Extended Year Warranty:** When using Tafco's delivery and installation start-up, your regular one year warranty is extended to two years on parts and labor! All other terms and conditions of the standard Tafco warranty apply.

Tafco offers several Installation & Delivery options to best meet your needs, including: delivery only, delivery + installation, or customer arranges delivery and Tafco installs. Installation & Delivery costs are determined by the distance involved and the size of the unit. Estimates can be provided upon request.

**Contact Tafco today at: [800-233-1954](tel:800-233-1954) or [info@walkins.com](mailto:info@walkins.com)**



# WARRANTY STATEMENT

## **TAFCO LIMITED 1 YEAR REFRIGERATION PARTS WARRANTY**

Tafco warrants the original purchaser of the Tafco refrigeration equipment that such equipment is free from defects in materials and workmanship for normal use and service. Tafco's obligations under this warranty shall be limited to replacing any parts of the refrigerated equipment F.O.B. Factory, which prove defective within twelve (12) months from the date of invoice thereof. This warranty shall not apply to the refrigerated equipment of any part thereof which has been subject to any accident caused in transit, alterations by unauthorized service, negligence, abuse, misuse, or damages by flood, fire, or Acts of God. This warranty shall not be deemed to place any liability on Tafco, for any transportation charges, any labor, or cost on the replacement of a part or parts. Refrigerated fluids, oils, and expendable items such as filters are not covered by this warranty.

## **TAFCO LIMITED 60 DAY REFRIGERATION SERVICE WARRANTY**

Tafco offers a 60 day service labor contract standard for the Tafco refrigeration equipment. The 60 day warranty shall cover those costs incurred by the Original Purchaser for a period of sixty (60) days from the date of shipment of the unit to the Original Purchaser. The term "Original Purchaser" as used herein means that person, firm, association, or corporate for whom the unit was originally installed. Any claims under this warranty must be made in advance of the needed repairs. Upon completion of the repairs, an itemized statement must be submitted and must contain the following information: 1) Dealer name, invoice number, model number, and serial number of the unit. 2) Date the unit failed, together with the name and address of the service agency called in to repair the unit. 3) Full description of and circumstances surrounding the unit failure. 4) Itemized bill of the repairs made to the unit. Upon review and approval of the claim, payment will be made only for reasonable cost of service labor necessary to repair the unit, and cost of replacement parts.

## **TAFCO LIMITED 1 YEAR REFRIGERATION SERVICE WARRANTY (available at additional cost)**

Tafco offers a one year service labor contract if purchased by the Original Purchaser at the time of submission and acceptance of the order for the Tafco refrigeration equipment. The one year warranty shall cover those costs incurred by the Original Purchaser for a period of one (1) year from the date of unit shipment to the Original Purchaser. The term "Original Purchaser" as used herein means that person, firm, association, or corporate for whom the unit was originally installed. Any claims under this warranty must be made in advance of the needed repairs. Upon completion of the repairs, an itemized statement must be submitted and must contain the following information: 1) Dealer name, invoice number, model number, and serial number of the unit. 2) Date the unit failed, together with the name and address of the service agency called in to repair the unit. 3) Full description of and circumstances surrounding the unit failure. 4) Itemized bill of the repairs made to the unit. Upon review and approval of the claim, payment will be made only for reasonable cost of service labor necessary to repair the unit, and cost of replacement parts.

## **TAFCO LIMITED FOUR YEAR EXTENDED COMPRESSOR WARRANTY (available at additional cost)**

In addition to the one year warranty on the refrigeration equipment, Tafco agrees to replace, to the Original Purchaser only, the compressor, to be replaced by similar or interchangeable parts in design and capacity, at any time during the four (4) years following the first year warranty period, if it is shown to the satisfaction of Tafco that the sealed-in system is not operative due to defects in factory workmanship or material as originally supplied, and that normal use and reasonable care have been exercised. This warranty does not apply to the cabinet, fan, fan motor, controls, or any part other than the hermetically sealed system. The warranty does not apply to accidents for damage in transit, alterations by unauthorized service, abuse, misuse, or damage by flood, fire, or by Acts of God.

## **TAFCO 10 YEAR PANEL WARRANTY**

Tafco warrants to the Original Purchaser of the Tafco foamed-in-place panels manufactured and sold by it, to be free from defects in material and workmanship under normal use and service for a period of ten (10) years from the date of original shipment. Painted surfaces shall be warranted 18 months from the date of shipment. All hardware and electrical components (except lights and refrigeration systems, covered separately) are warranted against defects in workmanship under normal use and service for a period of one year from date of shipment. The obligation of the manufacturer under this warranty shall be limited to repairing or replacing (not including labor) at their option FOB factory, panels, hardware, and electrical components which prove defective within the warranty period.

UNDER NO CIRCUMSTANCES WHATSOEVER SHALL TAFCO BE LIABLE TO PURCHASER, OR TO ANY PERSON, FOR ANY SPECIAL OR CONSEQUENTIAL DAMAGES INCLUDING, BUT NOT LIMITED TO, LOSS OF PRODUCT STORED IN A TAFCO COOLER OR FREEZER OR LOST PROFIT OR BUSINESS OPPORTUNITY. UNDER NO CIRCUMSTANCES SHALL TAFCO BE LIABLE FOR ANY AMOUNT IN EXCESS OF TAFCO PRICE FOR GOODS SOLD BY TAFCO.

**THESE WARRANTIES ARE IN-LIEU-OF ALL OTHER WARRANTIES EITHER EXPRESSED OR IMPLIED.**

**For assistance with a warranty, please contact our warranty department.**



*Walk-In to Quality*

**1101 Graham Street  
PO Box 269  
Hyde, PA 16843**

**Phone: 814-765-9615  
Fax: 814-765-5410  
Toll Free: 800-233-1954  
[www.walkins.com](http://www.walkins.com)**

072011-5M

**Due to continuing development, specifications are subject to change  
without notice. For more information please contact us.**

© TMP Manufacturing Company, Inc. Revised July 2011. All Rights Reserved.